

## ***PenMount Windows 2000/XP Software Installation for DMC9000 controller***

This driver supports Windows 2000/XP. PenMount Windows 2000/XP driver detail contents are list as below:

‘DMC9000.inf’

‘DMC9000.sys’

‘DMC9000.cat’

‘SETUP.EXE’

To install the software to your computer, your computer system must have Windows 2000/XP system running and installed PenMount Serial Interface control board such as 90A4, 9026B, 9036 or 9084 control board inside.

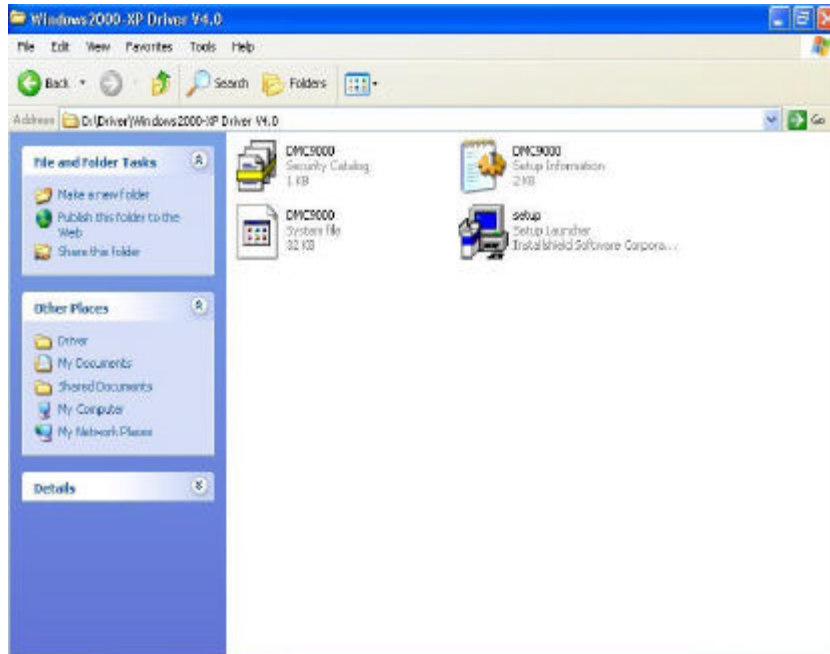
If you have an older version of PenMount Windows 2000/XP driver installed in your system, please remove it first.

Insert PenMount drivers CD-ROM

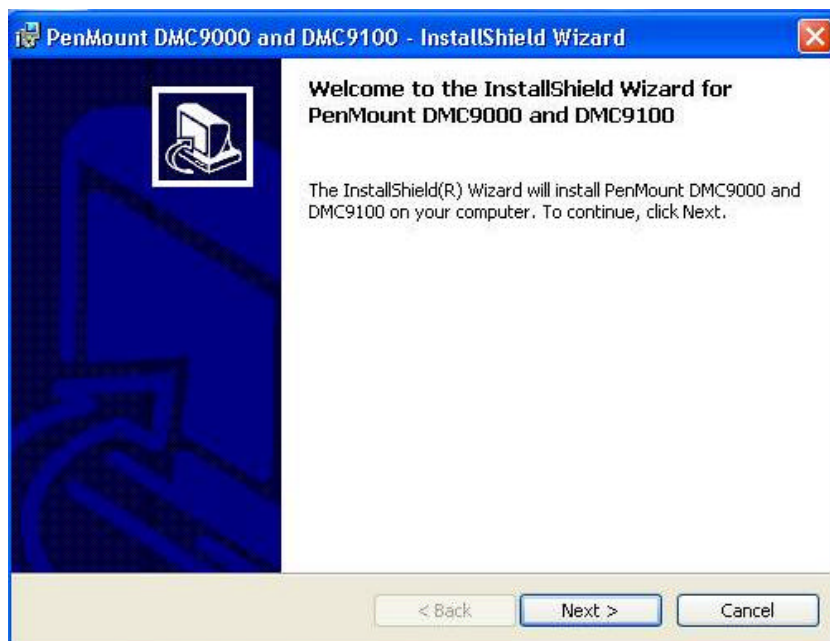


Follow up the steps below to install the PenMount Windows 2000/XP driver.

1. Please select the CD-ROM to start installation



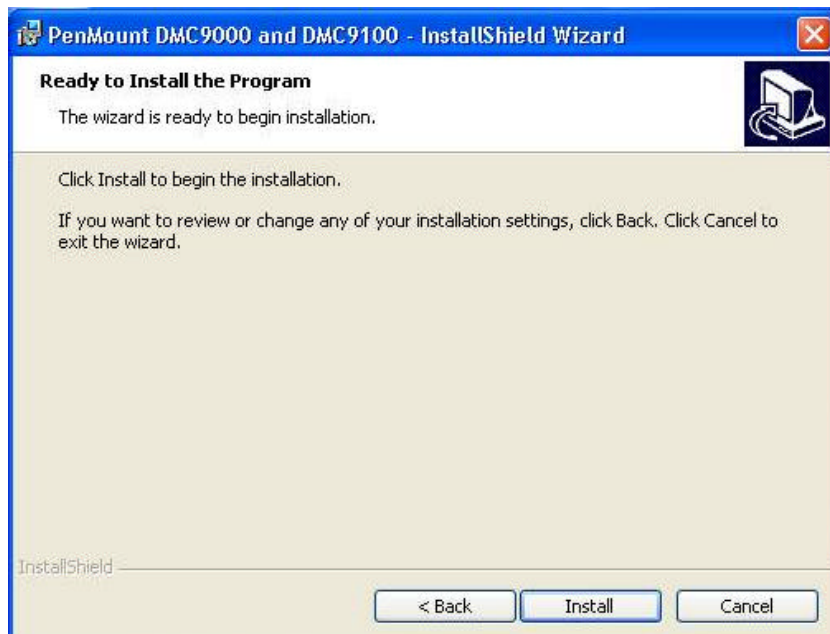
2. The screen displays copying "installation wizard" and "PenMount Utilities Installation" screen plus "welcome" message appear. Select "Next".



3. The next screens are "Software License Agreement", select "I accept the terms is the license" and "Next".



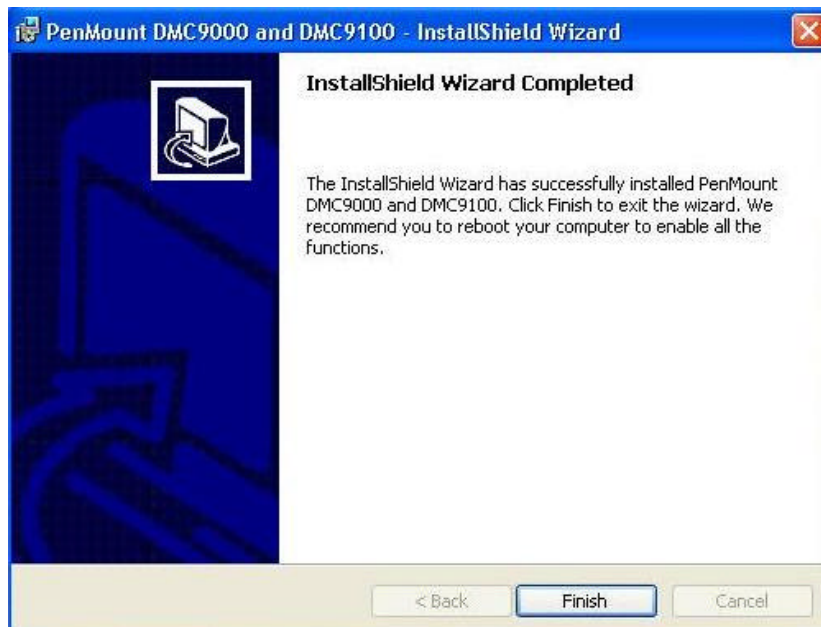
4. The next screen is "Ready to Install the Program", Select "Install".



5. The next screen is “Hardware Installation”, Select “Continue Anyway”.



6. The next screen is "InstallShield Wizard Completed", Select "Finish".



## ***PenMount Windows 2000/XP Driver Functions***

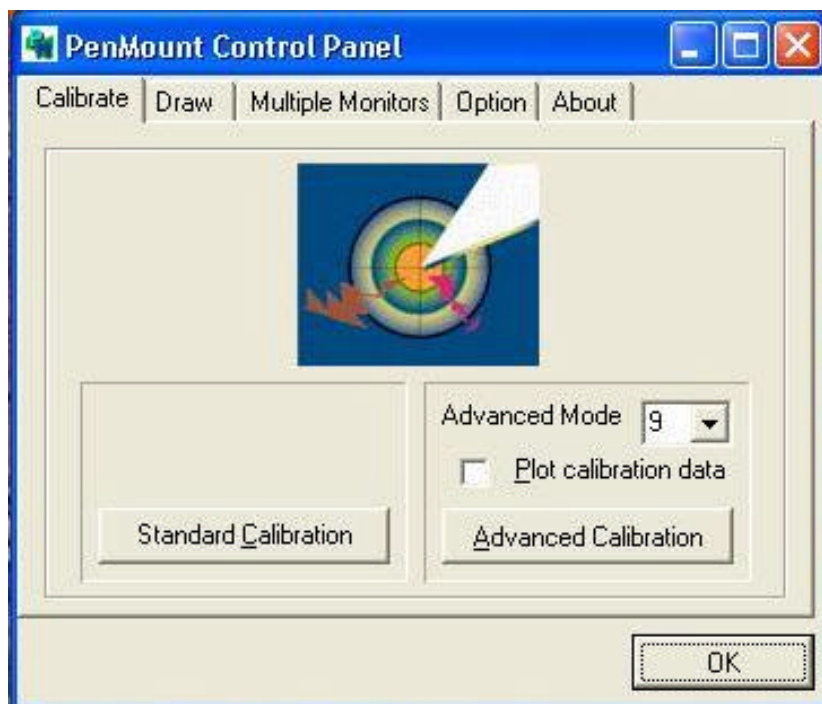
### **A. PenMount Control Panel**

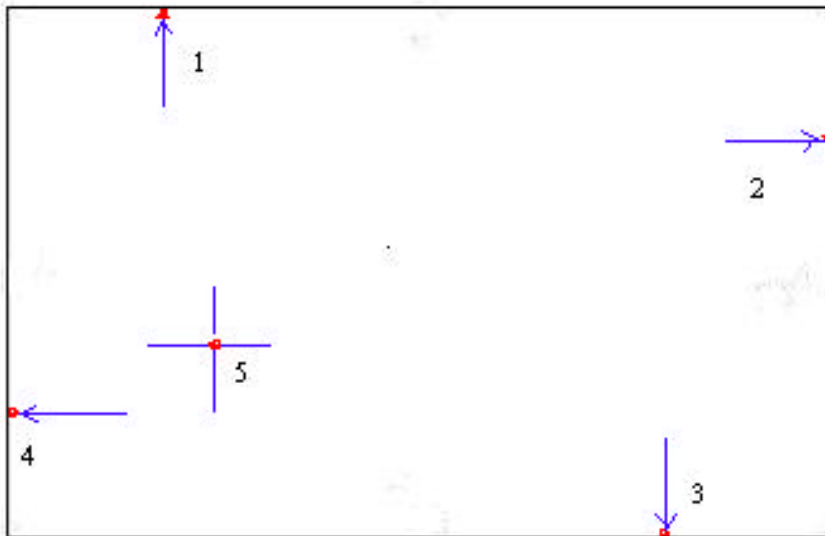
#### **Calibrate:**

After completing PenMount DMC9000 Driver installation, please follow up below procedures to carry out calibration, PenMount offers several ways for calibration your touch screen. The standard way is using 'Standard Calibration' to adjust the touch screen. The more advanced way is for decorating the aged touch screen to perform normally by using 4, 9, 16 or 25 points 'Advanced Calibration' function.

#### **Standard Calibration:**

Standard Calibration is designed for normal usage. After starting Standard Calibration, you may find arrow signals. Please touch with finger or stylus on the red points by clockwise turn when the arrow signals showed. Standard Calibration is completed after the 5th red point. If you want to skip the calibration, please press 'ESC' key.

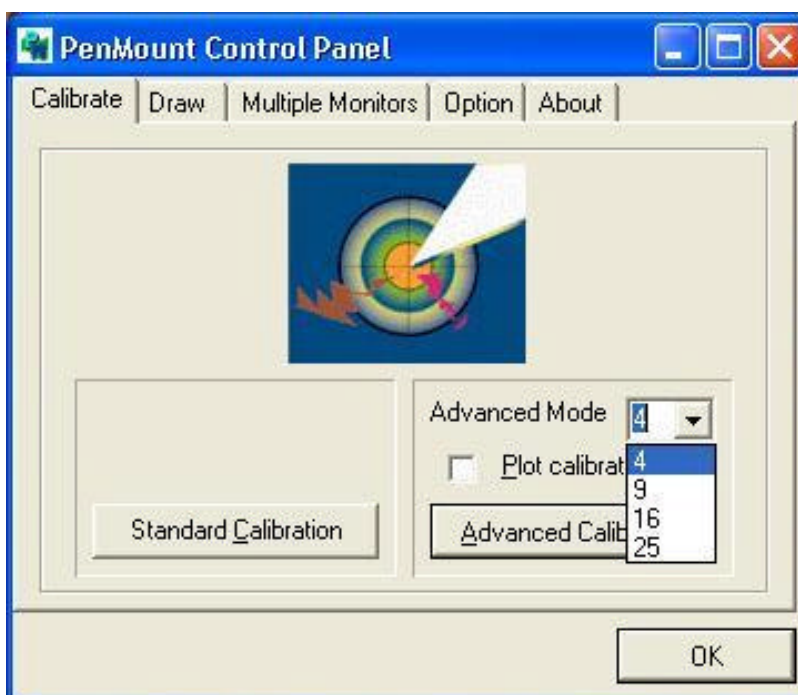


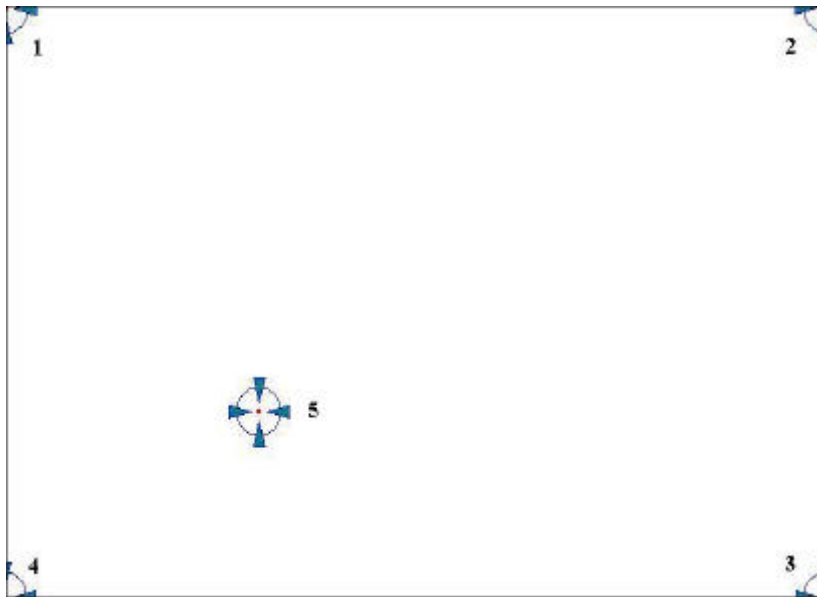


### **Advanced Calibration:**

Advanced Calibration is particularly for more accuracy of touch panel, by using our Advanced Calibration function, 4, 9, 16 or 25 calibration points, the touch panel linearity will be performed very well even the touch screen was aged. When you start the Advanced Calibration, you may find animated calibration points. Please hit the red points with a stylus one by one. The Advanced Calibration is complete after you touch the last red point. If you want to skip it during doing the calibration, please press 'ESC' key

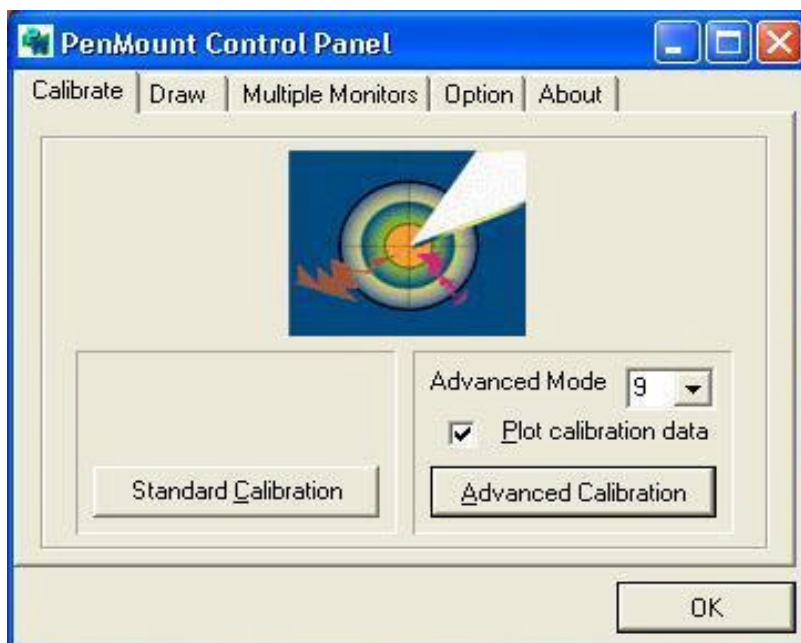
It is suggested to use a stylus during Advanced Calibration to maintain high degree of accuracy.





***Plot Calibration Data:***

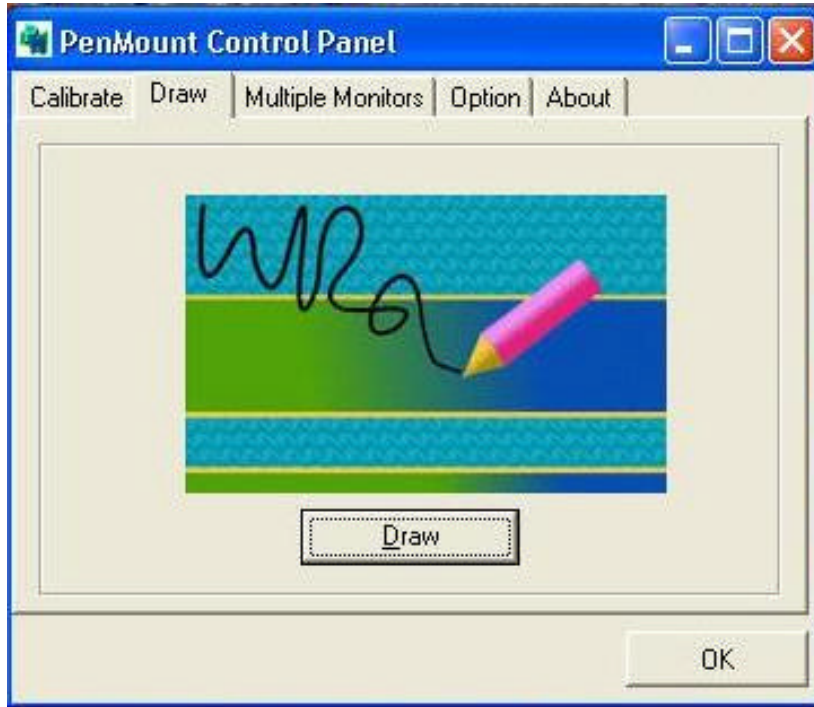
When you tick this function, touch panel linearity comparison picture occurs after finishing Advanced Calibration. Blue lines means touch panel linearity and black shares are for comparison.





**Draw**

Test or demonstrate PenMount touch screen operation, also the touch location is shown on the display, touch “DRAW” to start

**Multiple Monitors:**

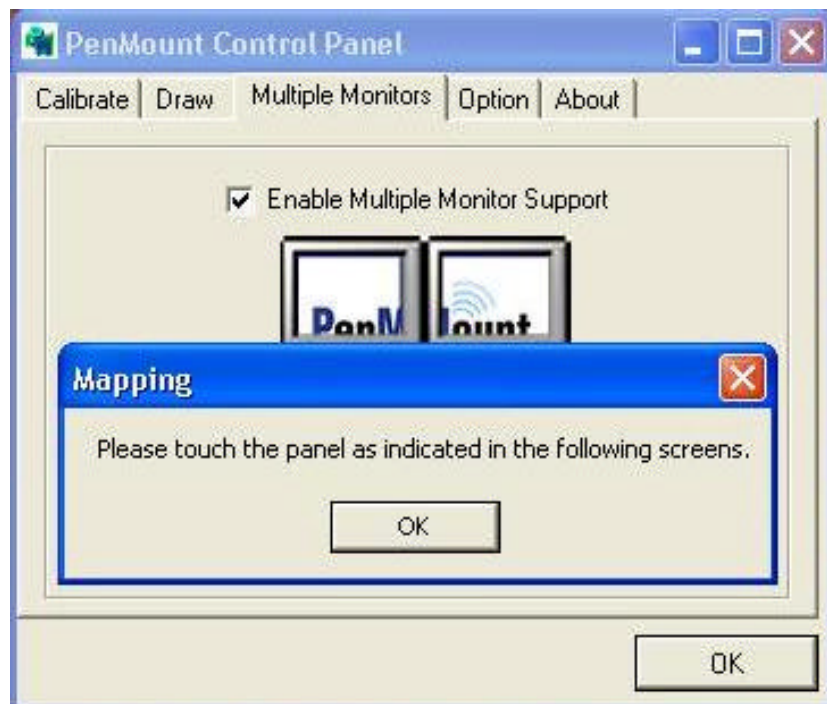
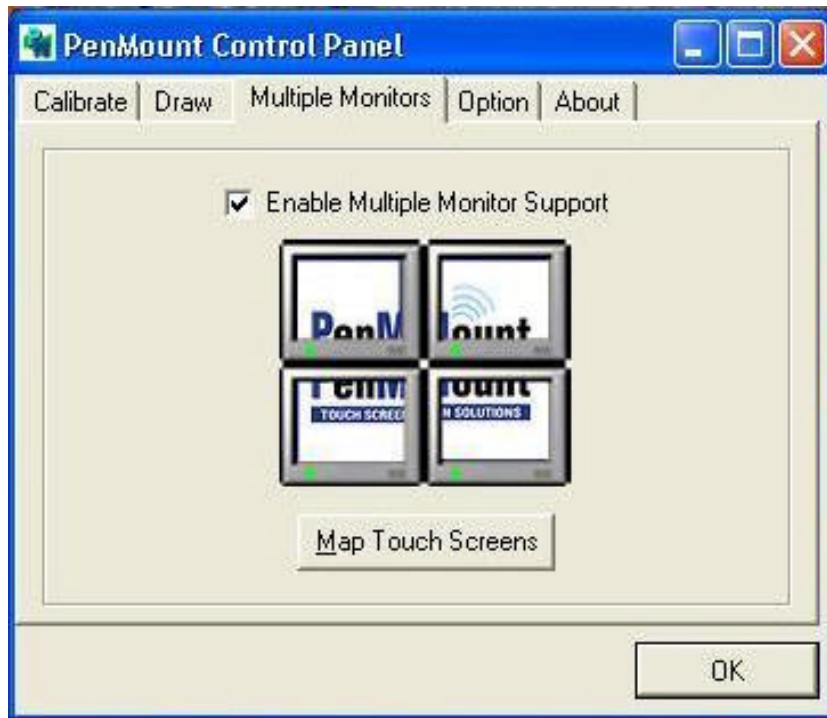
Multiple Monitors is an optional item of PenMount driver to support multiple touch screens in one system, it is supporting up to 4 sets of touch screen displays. First of all, please install your PenMount touch screen control board inside your display monitor or system, each display monitor has to set up one pcs of PenMount touch screen control board by either installed inside the display monitor or put in the central area. Connect the PenMount control board to computer com port via RS-232 interface, the driver installation procedures are same as normal way, please refer to our PenMount drivers users manual. At present, PenMount Multiple Monitors can support following mode:

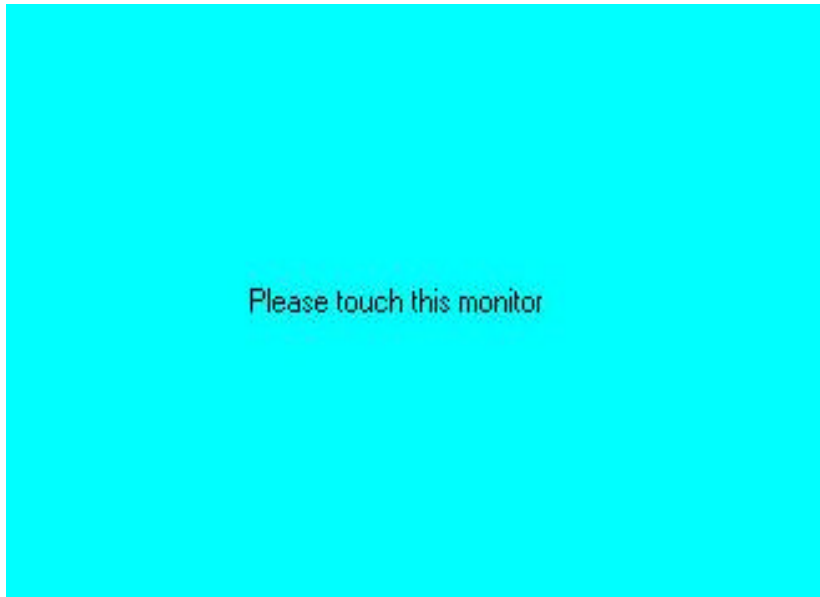
- Windows Extend Monitor Function
- Matrox DualHead Multi-Screen Function
- nVidia nView Function

**Multiple Monitors is for multiple display monitors, do not use this function if you have only one touch screen display. Please note once you turn on this function, the Rotating Functions are been disabling then.**

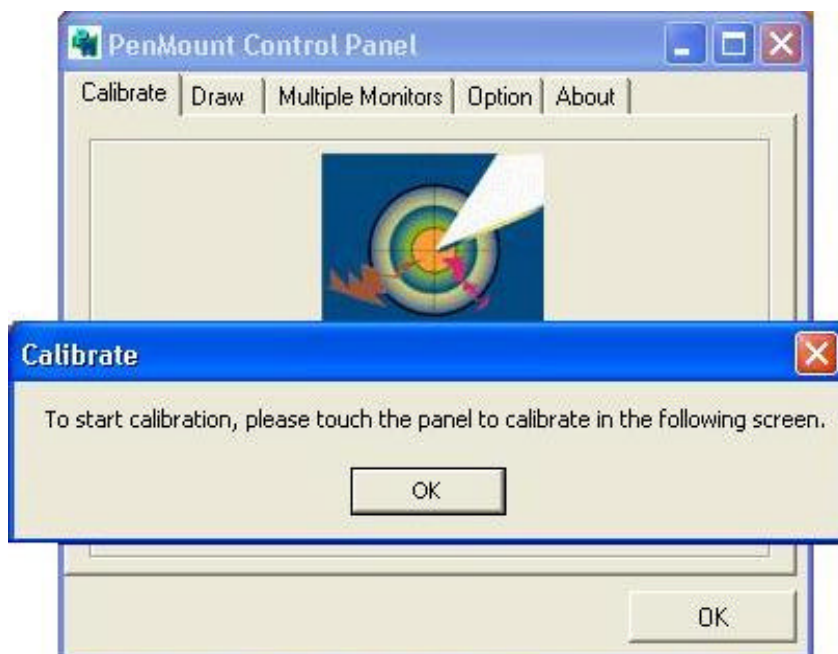


When you need this multiple displays function, select [Enable Multiple Monitor Support] icon, then choose [Map Touch Screens] to assign one touch controller to one touch display by touch the display. Follow up the screen message to map the touch display to a touch controller





Then execution 'Calibration' function, select the display that you are going to do the calibration, then do it. Calibration way is same as single display calibration way.



**Note:**

- ✎ If you used a single VGA output for multiple monitors, please do not open the [Multiple Monitors] function. Just follow regular procedure for calibration on your each desktop monitor.
- ✎ The Rotating Functions will be disable if you use this Multiple Monitors function
- ✎ If you change the resolution of display or screen address, you have to redo [Map Touch Screens] to have system understand where and what the display is

## Option:

It support two functions - Operation Mode and Beep Sound Mode

### **Operation Mode:**

Stream Mode: It is a Normal mode, same as all the function of standard mouse, the dragging function also included.

Point Mode: It provides the click function only, not allowed the dragging.

### **Beep Sound Mode:**

Enable Beep Sound: “Turn On” or “Turn Off” the function of Beep Sound

Beep on Pen Down

Beep on Pen Up

Beep on both of Pen Down/Up

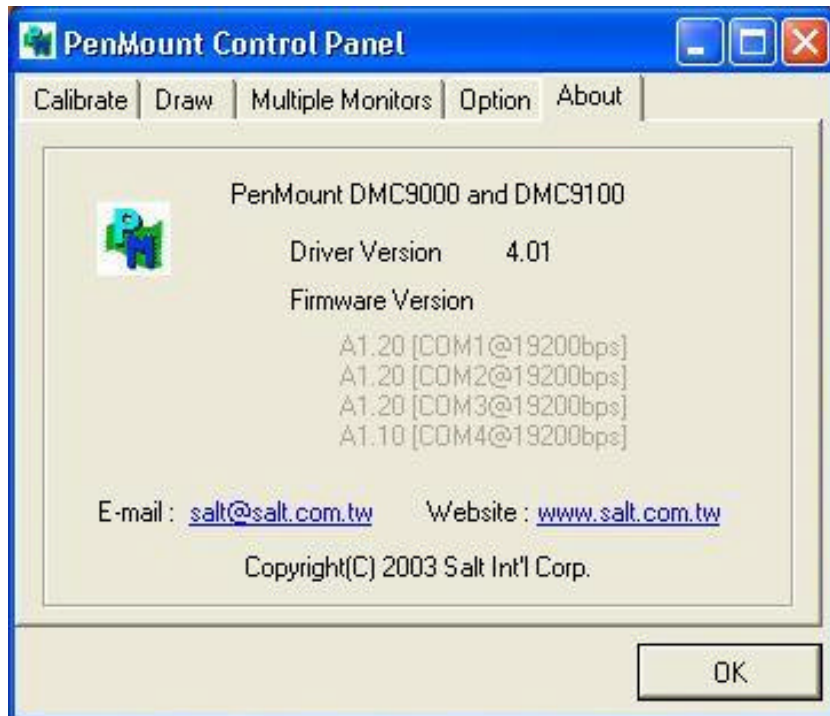
Beep Frequency

Beep Duration



**About:**

It shows information about PenMount controller and this driver



## **B. PenMount monitor**

The PenMount monitor icon is shown in the menu bar of Windows 2000/XP system when turn on PenMount Monitor from PenMount Utilities. There are several functions on PenMount monitor :



### **Right Click Button:**

When select this function, there is a mouse icon shown in the right-bottom place of screen. It shows 'left button' being as default for normal use, touch this mouse icon to change the next touch to be 'Right Button' function. After one touch, the mouse icon will change to 'Left Button' automatically. If user needs to use right button again, user has to touch the mouse icon again for changing the button function.

### **Beep**

Turn on or off beep sound.

### **Pen Stabilizer**

This function is to avoid cursor vibration. It is suggested to close this function normally

### **Exit:**

Close the PenMount Monitor function.

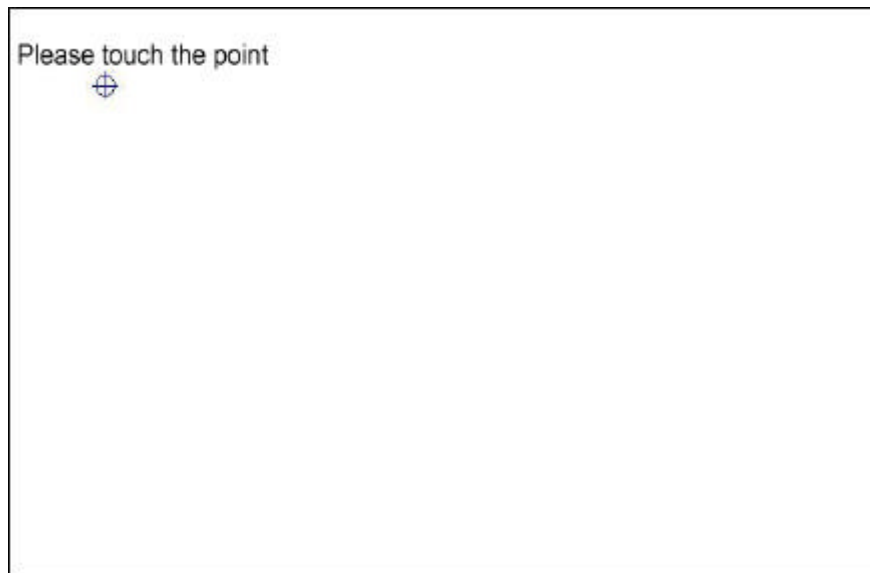
### **C. PenMount Rotating Functions**

PenMount driver for Windows 2000/XP supports several rotating software such as


Portrait's Pivot Screen Rotation Software  
ATI Display Driver Rotate Function  
nVidia Display Driver Rotate Function  
SMI Display Driver Rotate Function  
Intel 845G/GE Display Driver Rotate Function

#### **How to operate the rotate function:**

1. Install the rotate software first.
2. Chose the rotate function, and then you will see the calibration point, please touch that point, and cursor will map the rotation itself.



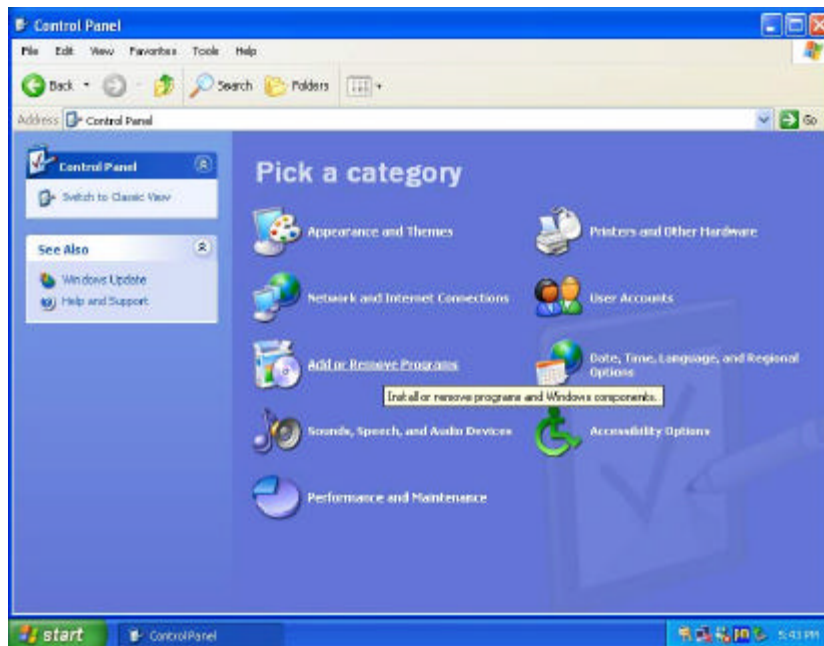
#### **Note:**

 The Rotating Functions will be disable if you use this Monitor Mapping function

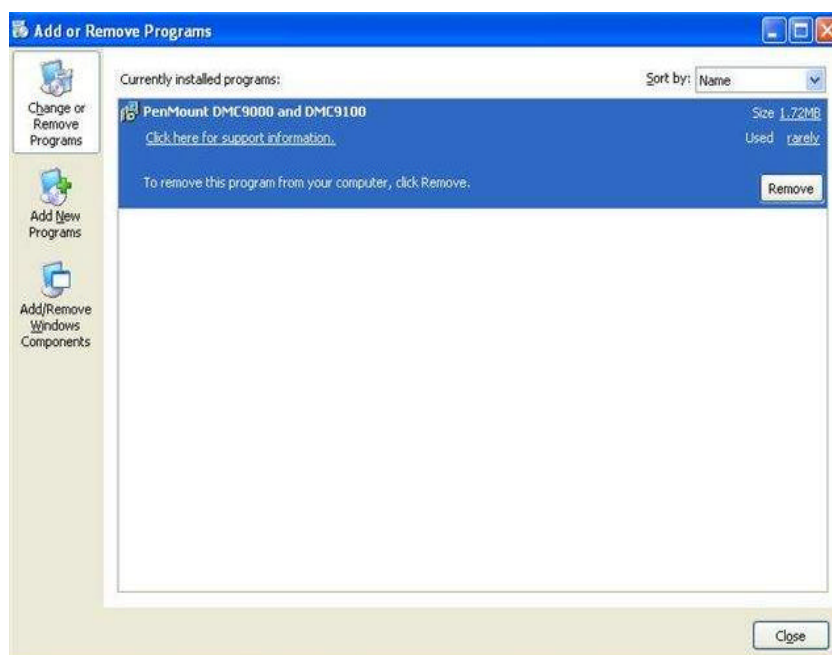
## How to uninstall PenMount Windows 2000/XP driver

Before you uninstall PenMount Windows 2000/XP driver, please ‘EXIT’ ‘PenMount Monitor’ that is in menu bar first.

From ‘Control Panel’ of “Settings”, select ”Add/Remove program”, select ‘PenMount DMC9000’ and select “Add/Remove” button.



Then select ‘PenMount DMC9000 and DMC9100’, touch ‘Remove’ icon and following up the images showed to remove the PenMount driver.





Select “yes” to uninstall the driver and then select close to finish the job.

